

# AU-144MHD

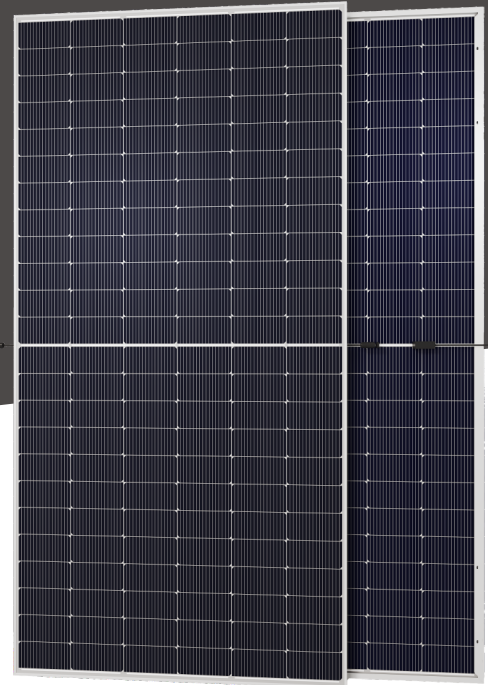
Topcon Technology

POWER RANGE

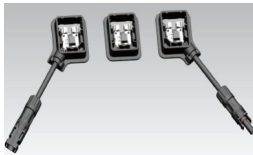
550W~580W

CELL SIZE

182\*91mm

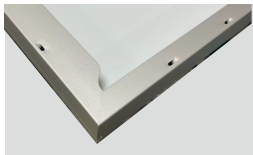


16BB



### JUNCTION BOX

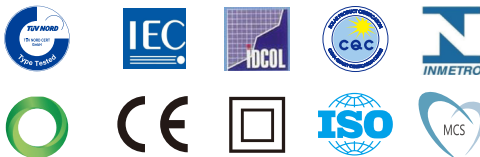
Waterproof protection grade: IP68  
Safety Level: Class II  
Maximum System Voltage: 1500V  
outstanding waterproof level ·  
Effectively resist harsh environments



### Frame

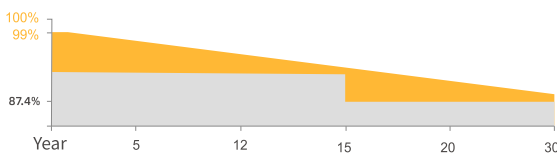
Strong mechanical load  
resistance up to 5400Pa  
Anodic oxidation layer resistant to  
chemical corrosion available  
in silver and black

## QUALIFICATIONS AND CERTIFICATES



· IEC61215 / · IEC61730

## WARRANTY



15 YEARS

Guarantee on product material and workmanship

30 YEARS

Linear Power output warranty



### SMBB Technology

Better light trapping and current collection to improve module power output and reliability.



### PID Resistance

Excellent Anti-PID performance guarantee via optimized mass-production process and materials control.



### Higher Power Output

Module power increases 5-25% generally, bringing significantly lower LCOE and higher IRR.



### Enhanced Mechanical Load

Certified to withstand: wind load (2400 Pascal) and snow load (5400 Pascal).

AUSTA ENERGY established in 2008, is a high-tech enterprise integrating R&D, production and sales of solar energy products. It is committed to the overall solution of distributed photovoltaic system and provides services from consulting, design, construction, financing to intelligent operation and maintenance.

AUSTA has 3 production sites in China and branches and representative offices in more than 10 countries overseas. Products include solar cells, modules, On/Off grid solar system, solar pump and other solar related applications. Our products have passed many international certifications such as TÜV, MCS, CEC, IEC, ISO, CE, CQC and so on. With excellent quality, our products are exported to more than 100 countries of the world.

Since its establishment, AUSTA has always followed the idea of "Smart energy, Lightening future". It has followed the steps of "the Belt and Road Initiative", we bring bright light to the countries and people who are short of electricity. Sharing the concept of modern civilization, and building a green home together.

## ELECTRICAL DATA(STC)

Model Type	AU550-36V-MHD	AU555-36V-MHD	AU560-36V-MHD	AU565-36V-MHD	AU570-36V-MHD	AU575-36V-MHD	AU580-36V-MHD
Peak Power(Pmax)	550.00	555.00	560.00	565.00	570.00	575.00	580.00
Maximum Power Voltage(Vmp)	41.50	41.64	41.77	41.92	42.07	42.22	42.37
Maximum Power Current(Imp)	13.26	13.33	13.41	13.48	13.55	13.62	13.69
Open Circuit Voltage(Voc)	50.21±3%	50.34±3%	50.47±3%	50.60±3%	50.74±3%	50.88±3%	51.02±3%
Short Circuit Current(Isc)	14.00±3%	14.07±3%	14.15±3%	14.23±3%	14.31±3%	14.39±3%	14.47±3%
Module Efficiency( % )	21.29	21.48	21.68	21.87	22.07	22.26	22.45

\*STC: irradiance 1000W/m<sup>2</sup>, AM1.5, and cell temperature of 25°C

## ELECTRICAL DATA(NMOT)

Model Type	AU550-36V-MHD	AU555-36V-MHD	AU560-36V-MHD	AU565-36V-MHD	AU570-36V-MHD	AU575-36V-MHD	AU580-36V-MHD
Peak Power(Pmax)	413.00	417.00	421.00	425.00	429.00	433.00	437.00
Maximum Power Voltage(Vmp)	38.99	39.12	39.25	39.38	39.51	39.64	39.77
Maximum Power Current(Imp)	10.61	10.67	10.73	10.79	10.85	10.91	10.97
Open Circuit Voltage(Voc)	47.70±3%	47.82±3%	47.94±3%	48.06±3%	48.20±3%	48.32±3%	48.46±3%
Short Circuit Current(Isc)	11.30±3%	11.36±3%	11.42±3%	11.49±3%	11.55±3%	11.61±3%	11.68±3%

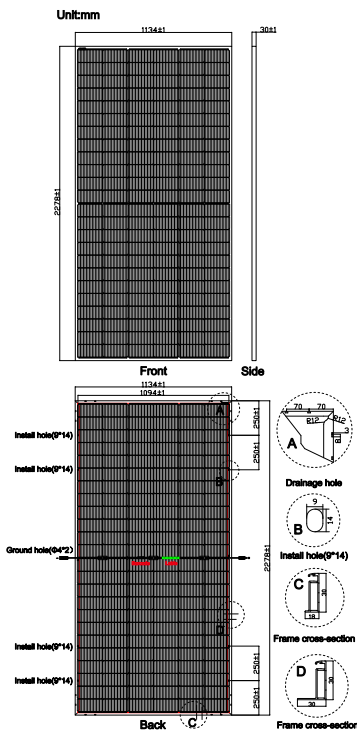
\*NMOT: irradiance 800 W/m<sup>2</sup>, AM 1.5, ambient temperature 20°C, wind speed 1 m/s

## ELECTRICAL DATA(BNPI)

Model Type	AU550-36V-MHD	AU555-36V-MHD	AU560-36V-MHD	AU565-36V-MHD	AU570-36V-MHD	AU575-36V-MHD	AU580-36V-MHD
Peak Power(Pmax)	609.00	615.00	620.00	626.00	632.00	637.00	643.00
Maximum Power Voltage(Vmp)	41.50	41.64	41.77	41.92	42.07	42.22	42.37
Maximum Power Current(Imp)	14.69	14.77	14.86	14.94	15.01	15.09	15.18
Open Circuit Voltage(Voc)	50.21±3%	50.34±3%	50.47±3%	50.60±3%	50.74±3%	50.88±3%	51.02±3%
Short Circuit Current(Isc)	15.51±3%	15.59±3%	15.68±3%	15.77±3%	15.86±3%	15.94±3%	16.03±3%

\*BNPI: back irradiance 135W/m<sup>2</sup>, AM1.5, and cell temperature of 25°C

## PV DRAWINGS



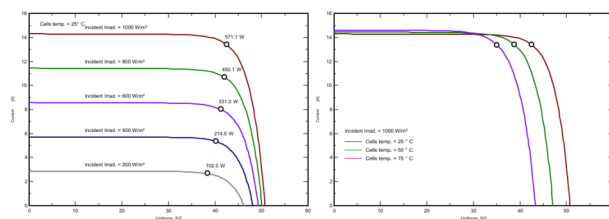
## TEMPERATURE & MAXIMUM RATING

Maximum System Voltage (V)	1500 V
Maximum Series Fuse Rating (A)	30 A
Power Tolerance	0~+3 W
Pmax Temperature Coefficients (W/°C)	-0.300 %/°C
Voc Temperature Coefficients (V/°C)	-0.250 %/°C
Isc Temperature Coefficients (A/°C)	+0.046 %/°C
NMOT Nominal Module Operating Temperature (°C)	45±2 °C
Operating and Storage Temperature (°C)	-40~+85 °C

## MECHANICAL CHARACTERISTICS

Cell Type	182*91 N Type Bifacial Mono
No. of Cells	144 (12*12)
Dimensions	2278*1134*30mm
Weight	32.20kg
Front Glass	2.0mm AR coating tempered glass
Back Glass	2.0mm Glazed Glass
Frame	Anodized Aluminium Alloy
Junction box	IP68 3diodes
Output cables	4mm <sup>2</sup> cable 35cm (Including MC4 connector)
MaxWind Load/Snow Load	2400Pa/5400Pa

## IV CURVE (570W)



Austa

## PACKING WAY

20FT container	5 Packages/180pcs
40HQ container	20 Packages/720 pcs